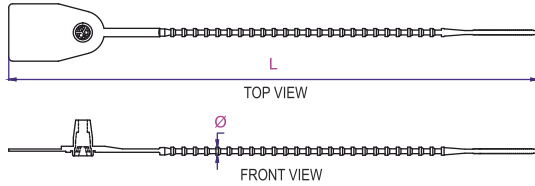




ADJUSTABLE BALL PULL UP SEAL



■ **Applications:**

For sealing door locks, eyelets, drums and bags

■ **Material:**

Nylon or HDPE

■ **Color:**

Red, Yellow, Blue, Green, Orange, White are standard colors
Other colors available upon request

■ **Operating Temp:** -40°C to +85°C

■ **Unit:**

100 Pcs/Pkt

Features:

- Its self locking design ensures firm Locking of cone – Ball Shaped adjustable length & accommodates varied diameter leaving no changes of failure or Tempering
- Its Unique design with Acetal insert locking mechanism provides temper proof secure locking
- Contains no metal parts & it is recyclable

Size L x Dia. (mm)	Material	Ten. Str.		Tag Marking space L x W (mm)	Cat No.
		Kgs	Lbs		
260 x Ø4.0	Nylon	30	66	22 x 24	SSB-2604L
260 x Ø4.0	Polypropylene	22	49	22 x 24	SSB-2604PL
390 x Ø4.0	Nylon	30	66	22 x 24	SSB-3904L
390 x Ø4.0	Polypropylene	22	49	22 x 24	SSB-3904PL